

ENABLING A WORLD IN MOTION





Suprajit

The image shows a 3D illuminated sign for 'Suprajit'. On the left is a circular logo with a red and white spiral pattern. To its right, the word 'Suprajit' is written in a bold, blue, sans-serif font with a white outline and a glowing effect. The sign is mounted on a dark blue wall with a red horizontal trim. Below the sign is a ceiling with recessed lighting.

At Suprajit, we understand that technology is an ever evolving aspect. Product enhancements, policy changes and groundbreaking innovations dictate that our products always be a step ahead of what the market demands. We ensure that we keep pace by investing in R&D while diversifying into more product categories and spreading our global footprint. We also enter into strategic alliances and partnerships to ensure that we are always in a position to deliver beyond expectations, true to our dictum of being

'Ready for tomorrow. Ready for the world.'

SUPRAJIT - THE FACT SHEET

Tech Centres: 6

Global Presence: 9 Countries

No of Plants: 21

Businesses: 5

Employees: 2650

Sales Turnover: USD 230 Mn

Founded 1985



PIONEERING ‘CONTROLS’ FOR THE WORLD IN MOTION

Born of Entrepreneurial spirit in 1985, Suprajit today has carved a niche for itself as a pioneer in the design and manufacture of Mechanical Control Cables and is recognized as India's largest cable maker and the world's largest in two-wheeler light duty.

As a part of its strategic expansion, both organic and inorganic new businesses that have been established include automotive lighting (halogen and Led), electronic product division, braking systems and Independent aftermarket.

Key acquisitions in the last two decades include Wescon Controls, Phoenix Lamp Division, and very recently Kongsberg LDC.

Headquartered in Bangalore-India, Suprajit has transformed into a truly diversified business with multi products, customers, brands and presence across the globe without sacrificing its tenets on Quality, Cost, Delivery and Development. Suprajit globally offers local manufacturing, sales, and engineering support as well as electromechanical actuation technologies. It is driven by its single-minded goal of “Customer Satisfaction” and in this pursuit of excellence, it continues to be recognized as a “Value for Money Global Supplier” to customers across the spectrum.

Our Driving Principles



- Consolidating position as established global mechanical cable marker; diversifying and de-risking revenue profile
- New plant at SAL, Bangalore and Pathredi
- Acquisition of Speedo cable business (4W business) of Pricol
- Acquisition of Phoenix Lamps Limited
- Acquisition of Wescon Controls, Wichita, USA.
- Launched two new plants in Chennai and Sanand

- Listing of shares in NSE and BSE
- India's largest cable maker
- Acquisition of Shah Concabs
- Plants in Bangalore, Manesar and Chakan
- 'Enterprise of the state' award by KSFC

- New plants in Pantnagar, Haridwar and Manesar
- 100% EOU for non-automotive cables in Bangalore
- Best Enterprise of the State Award by Karnataka State
- Twin Awards by CNBC/ICICI/CRISIL- SME of the year & Auto Ancillary of the year
- Acquisition of CTP Gills Cables, one of the oldest cable companies with marquee global customers – now renamed as Suprajit Europe

Commencement of operations

1985

1986-95

Two new cable plants in Bangalore

1996-2005

2006-10

2011-16

2019-21

- Acquisition of OSRAM

Acquisition of Kongsberg

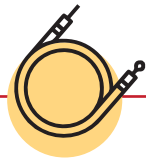
2022

KEY MILESTONES IN OUR JOURNEY:



Suprajit

STRATEGIC BUSINESS UNITS



MOTION CONTROL PRODUCTS

Mechanical Control Cables

- Standard & Specialized Push Pull Cables
- Body and Seat Cables
- Transmission Cables
- Parking Brake Cables
- Gear Shift Cables & Mechanisms
- Dip Stick Indicators
- Special Custom Cables

Others

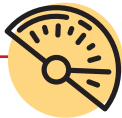
- Sensors and Actuators
- Brands: Suprajit and Wescon
- Applications: Two Wheelers, Automotive and Non-Automotive



AUTOMOTIVE LIGHTING

Halogen Bulbs

- Halogen Bulbs for Range of Two -Wheelers, Automotive and Non-Automotive segments
- Brands: Phoenix, Trifa, Luxlite
- Complete LED solutions



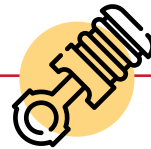
ELECTRONIC PRODUCTS

- **Speedometers** - Analog and digital Speedometers for 2W, 3W, 4W, Tractor and Non-Automotive
- Electronic Throttle
- Actuators
- USB
- Brands: Suprajit



BRAKING SYSTEMS

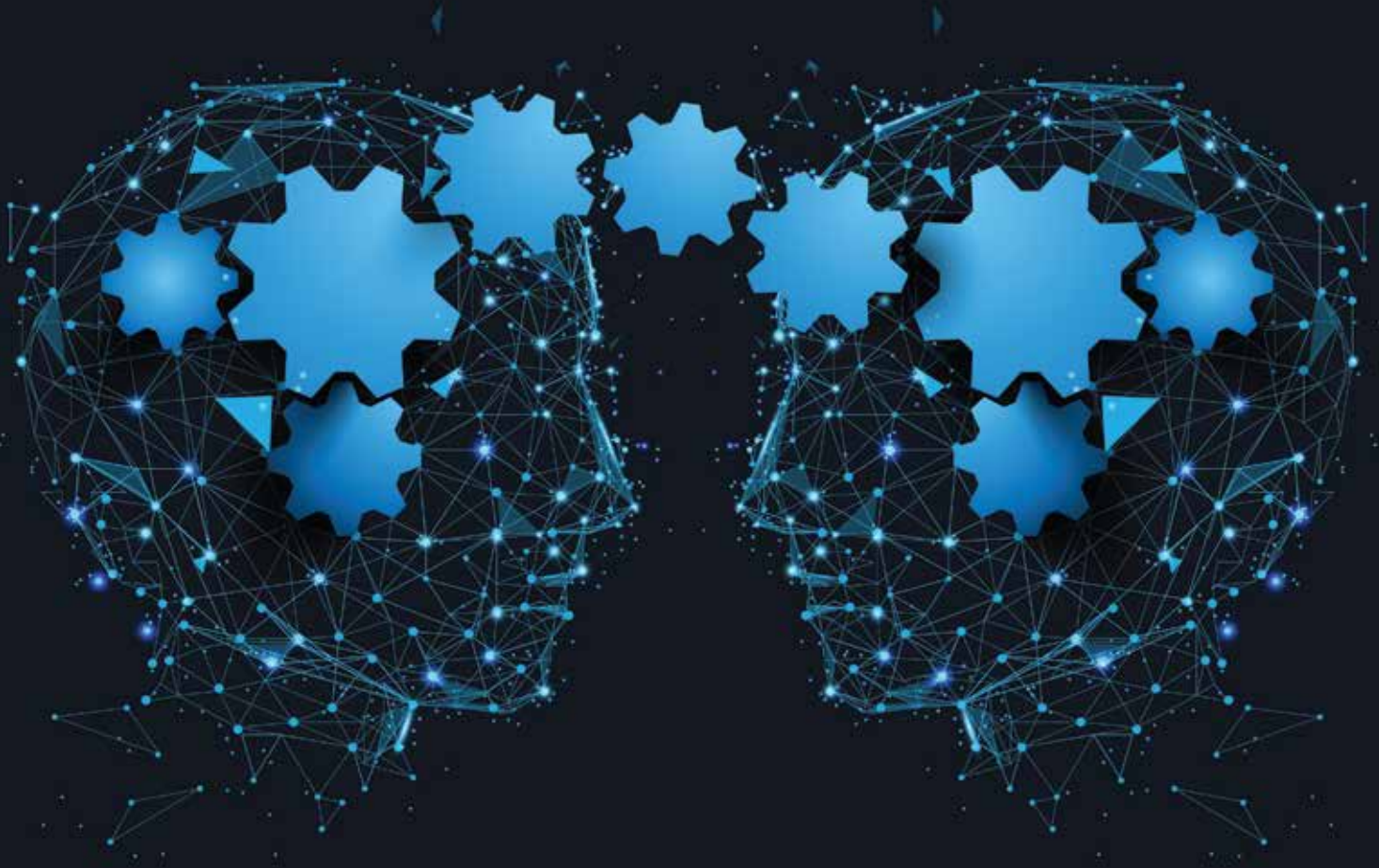
- Geometric Change Braking System for Two Wheelers
- Brands: Suprajit



INDEPENDENT AM PRODUCTS.

- Control Cables
- Friction Products
- Instrument Clusters
- Engine Parts
- Lighting
- Other Accessories

**SOLUTIONS THAT ARE
ALWAYS A STEP AHEAD.**



Bespoke Engineering

One of the hall marks of Suprajit is its strength in co-creating products by working closely with the customer from the early stages of vehicle development, meeting customer requirements day after day through our expertise and adopting a strong and diligent APQP process.

While standardization is inevitable in serial production, we will always strive that extra to find the best custom solution which will deliver that extra value always. We are driven by our single-minded goal of Customer Satisfaction and will leave no stone unturned in our approach and deliver smart, flexible and practical solutions.

Select List of Customised Solutions

Parking Brake handles

- Ratchet type 3W, tractors, 4W
- Toggle type Earth moving equipment's
- Locomotive park brake release mechanism

Combined Braking systems

- Handle Bar mount 2W bikes and scooters
- Steering column mount 2W scooters
- Wheel mount 2W bikes

Complete Braking system 2W bikes and scooters

Mechanical Braking system 2W bikes and scooters

Gear shifter cables

- Manual 4W LCV, HCV, 3W
- AT 4W LCV, HCV, PASSENGER

Electronic Throttles

- Hand Twist for 2W and 3W
- Lever TRACTORS AND NON AUTOMOTIVE
- Foot pedal TRACTORS AND NON AUTOMOTIVE

Digital Clusters

- TFT (up to 5~10")
- LCD (Positive/Negative)
- Hour Meters

Rotary Sensors 2W, 3W, Tractors And Non Automotive 2W, 3W

- USB Chargers 2W, 3W tractors and non automotive
- Regenerative Brake lever and Switch 2W, 3W, 4W EV

Linear solenoid actuators

- Charging Gun Lock 2W, 3W, 4W EV
- 2W boot release 2W, 3W, 4W EV

Rotary Clutch electronic Below 3Nm torque tractors seeding application

Seating solutions (its subsystem solutions for seating) automotive 4W

- Dual seat release mechanisms
- Head Rest actuators

Hood release actuators

HVAC mechanical control non automotive tractor LCV HCV

Seeder cable (Flexible shafts) tractors and seedert application

Chute rotator with clutch snow thrower

Brake Shoes 2W

KEEPING PACE WITH GLOBAL NEEDS



Development Capabilities:

The mother R&D Centre is headquartered at Bangalore and supported by two experienced R&D Centres in US and UK and Satellite Tech Centres across the 14 Plants. There are more than 70 Qualified and dedicated engineers across these centres.

Key Design & Development Capabilities

- Mechanical Design & Development
- Electro-Mechanical -Design support
- Testing
- Project and Program Management
- Manufacturing Engineering
- Tool /Fixture Design - End of Line Testing, POKA-YOKE,
- Low Cost Automation design
- CAD/CAE/FEA
 - Auto-CAD
 - CATIA/NX/IDEAS/ CREO
- Design, manufacture and test of ferrous, non-ferrous metals, plastics and anti-corrosion coatings
- Mold Flow Analysis
- Finite Element Analysis
- Standard and Custom Design
- Complete Braking system from scratch CG, Calculation, on road testing
- Actuators design and development

- TFT and LCD Software, hardware development
- Gear shifter cables

Critical Testing Capabilities

- Breaking & operating Loads
- Customised Test Rigs to test – Testing Efficiency & Loads
- Environmental Chambers
- Endurance Test Rigs
- Burning Behaviour
- Salt Spray Chambers
- Vibration Testing
- NALB certified Material
- Test Lab on demand
- Scaled down Dynamometer for MDBS and Break Shoes for component level testing
- Universal testing machine for all types of cables and tests
- Environment chamber
- IP testing (water and Dust)
- On road testing



STATE OF THE ART MANUFACTURING FACILITY



Manufacturing credentials

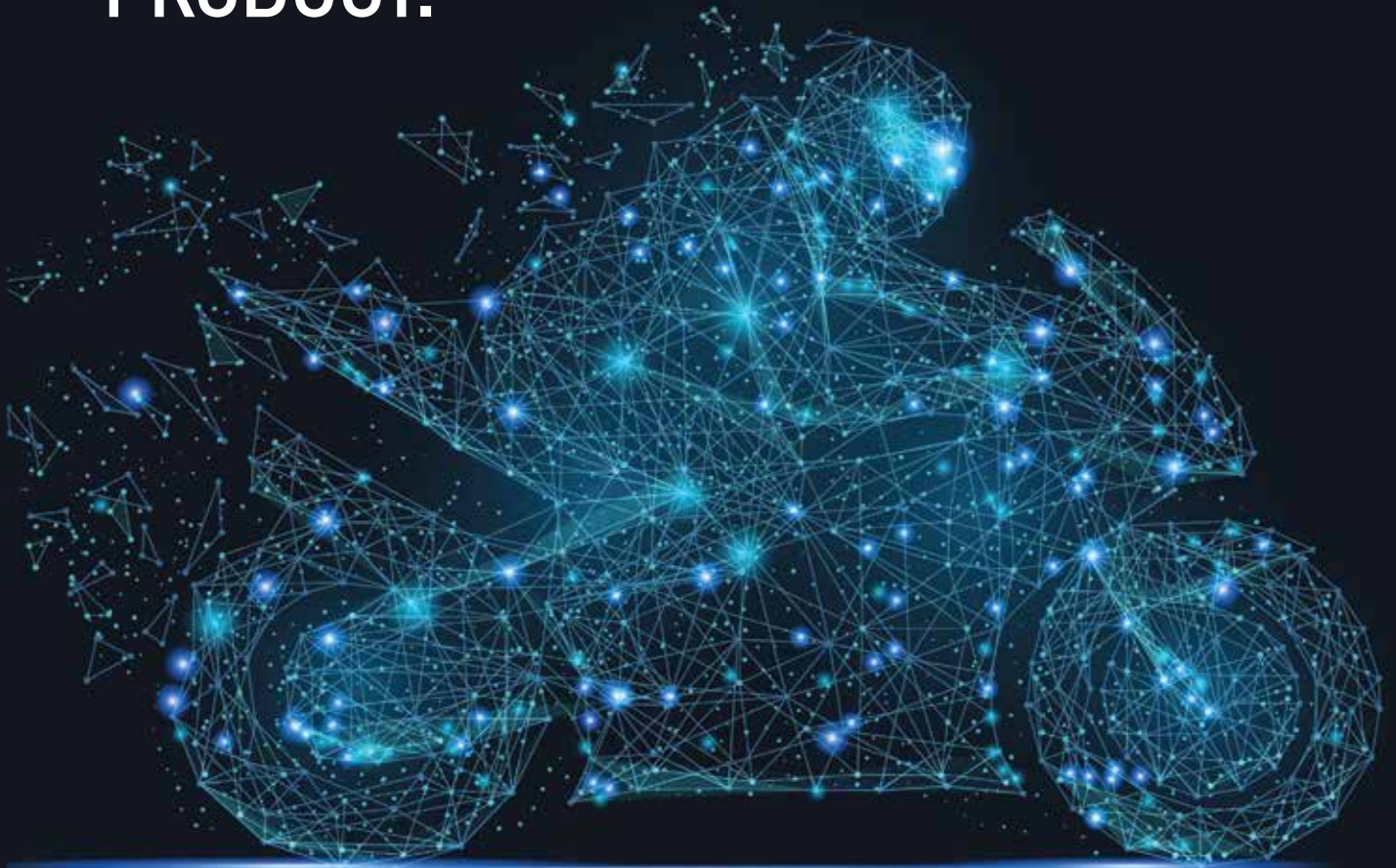
We have perfected the process of co-creating products along with our customers and perform as an extended team of theirs.

With aid of diverse quality systems deployed, quality and environmental parameters are routinely recorded and analysed. Our systems are qualified and certified to ISO 9001:2008, ISO/TS 16949:2009 for all our plants. Regular audits and training ensure continuous improvement resulting in sustaining high levels product quality.

- High Speed High Efficiency Mass Manufacturing Lines
- Stringent Process checks and Control at all stages assuring Zero-PPM, Zero Warranty
- Lean Manufacturing philosophy drives our QCDD metrics
- Best in Class practices of Six-Sigma, 5S, Lean, Poka-Yoke
- Low Cost Automation on critical processes
- In House -Injection Moulding and Extrusion facility
- Well Equipped Testing Function
- PLM enabled Product Management
- ERP & EDI enabled processes
- Global Manufacturing footprint: Proximity to Customer
- Adopting and Implementing TPM (Total productive maintenance/management)

All plants complied with ISO 9001: 2015 IATF 16949: 2016 and select plants ISO 14001:2015 and ISO45001:2018

**OE QUALITY.
IN EVERY
AFTERMARKET
PRODUCT.**



Independent Aftermarket

The Independent Aftermarket specialises in spare parts using its expertise in serial production and keen knowledge of the automotive terrain. This business supplies through trade and mechanic repair shops, products that are engineered, tested and proven to OE Quality under distinct brands and sales organizations catering to discerning customers.

Today the Aftermarket channel has a foot print with almost 20,000 Retail points in India.



Geography

India & Overseas

Cables

Control Cables for Two Wheelers, Three Wheelers, Automotive and Non-automotive segment

Friction Products

Brake Shoes, Brake Pads and Clutch Pads for Two Wheelers

Engine Parts

Filters for Two Wheelers and Three Wheelers

Instrument Clusters

Analog & Digital Speedometers for Two Wheelers



Geography

India & Overseas

Halogen Bulbs

Complete Range of Headlamps and Fog lamps for Two-Wheeler, Automotive and Non-Automotive Range

Aftermarket Accessories

- LED - Head Lamps Retrofits for Two Wheelers & Automotive markets
- LED-Trafficators
- Electric Horns
- Wiper Blades



Geography

Europe, Middle East, Africa and Latin America

Halogen Bulbs

Complete Range of Headlamps and Fog lamps for Two-Wheeler, Automotive and Non-Automotive Range

Aftermarket Accessories

- LED - Head Lamps Retrofits for Two Wheelers & Automotive markets
- LED-Trafficators
- Electric Horns
- Wiper Blades

**RECOGNIZED
THE WORLD OVER!**

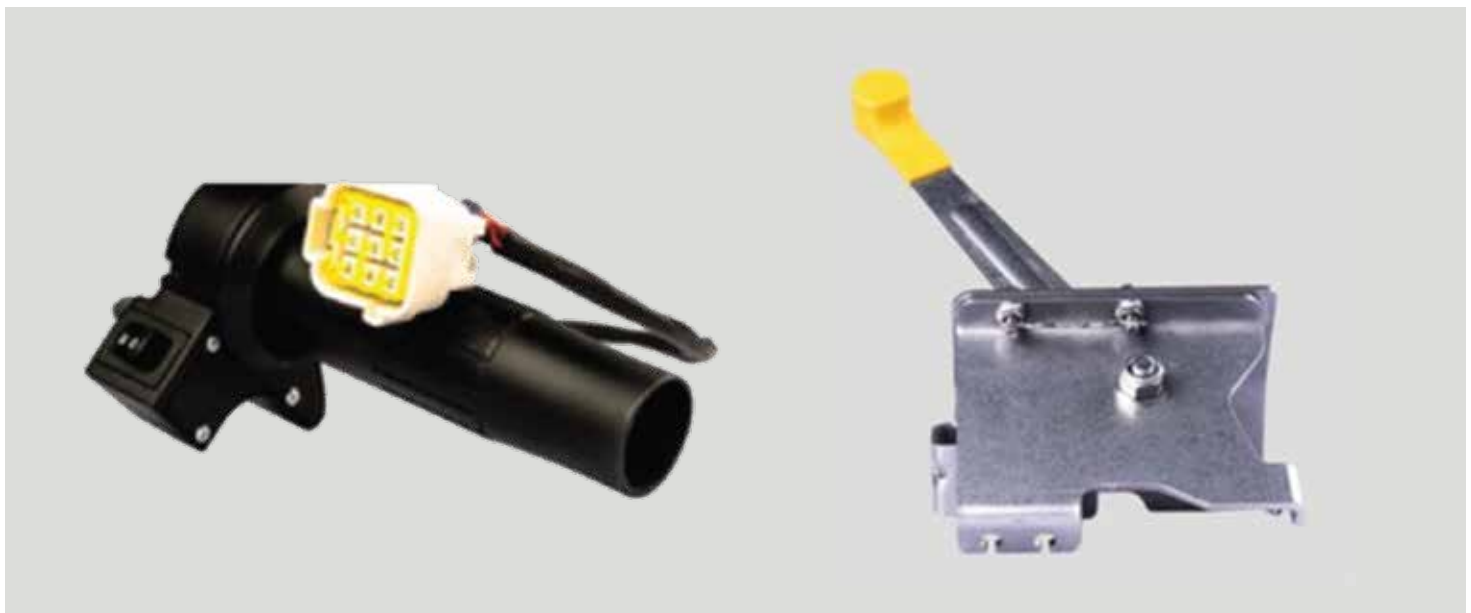


Awards & Acclaim

Suprajit's commitment to quality has received great acclaim and recognition around the world – evident in scores of awards bestowed. Our drive to innovate and deliver beyond expectations has made us the preferred partner to automotive giants.

- **Volkswagen**
'A' Grade Supplier Award, Quality Performance Award.
- **Honda Motor Cycles and Scooters**
Quality and Delivery Achievement Award.
A1 Grade supplier Award.
- **General Motors**
Supplier Quality Excellence Award
(3 years in a row).
- **John Deere**
Accelerated Global Sourcing Award.
- **Brose Key Supplier Award.**
- **Bajaj Auto Limited**
TPM Excellence Award.
- **Tata Motors**
Green Card for 'O' PPM.
- **Hero MotoCorp Limited**
Direct Online Supply (DOL) Award.
- **Bajaj Auto Limited**
Quality Consistency Gold Award.
- **Yamaha**
Cost Reduction & VA/VE activity award.
A grade excellence Award.
- **TVS, Bajaj and Mahindra**
various Awards.
- **1995**
KSFC Entrepreneur of the year for the promoter
- **2006**
CNBC/ICICI/CRISIL: SME of the year
Auto Ancillary of the year
- **2007**
NASSCOM: Best IT user Award in Automotive Sector

MOTION CONTROL PRODUCTS



REMOTE VALVE CONTROLLER



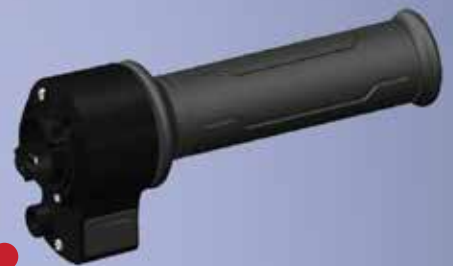
GEOMETRIC CHANGE BRAKING SYSTEM



SIMPLE GEAR TRAINS



ACTUATORS



THROTTLES/ACCELERATORS

SUPRAJIT AFTERMARKET RANGE



PHOENIX RANGE OF PRODUCTS



OUR MARQUEE CUSTOMERS

40+ PV OEMs & Tier-1s



10+ 2W OEMs



20+ OFH OEMs



15+ Lighting Tier 1s



The above logos are a creative representation of the list of our customer and is not an endorsement.



Marching ahead with confidence.